

SBS Signature Fruit Danish Selection SG 36x110

Signature Fruit Danish Selection (Multipack)

PRODUCT DESCRIPTION

A selection of 3 Danish pastries: Rhubarb & Custard Meringue Square, Cherry & Almond Bakewell Square, Apple & Cinnamon Square. Includes 1 x 135g icing bag.

| | |
|---------------------------|----------------------------------|
| Brand | Lantmannen Unibake |
| Manufacturer Product Code | 225843 |
| Product Type | Food |
| Product Category | Bakery - General |
| Storage Type | Frozen |
| Erudus ID | 003575bc38354a3faeee157034686c31 |
| Specification Type | Legacy |

Apple & Cinnamon Square

| | |
|-----------------------------|----------------|
| Manufacturer Component Code | 225844 |
| Outer Case GTIN | 05038910011538 |



INGREDIENTS

Ingredient Declaration

DOUGH: WHEAT Flour (with Calcium, Iron, Niacin, Thiamin), Vegetable Margarine (Palm Oil, Rapeseed Oil, Water, Emulsifier (E471), Salt, Acidity Regulator (E330), Flavouring), Water, Yeast, Egg (EGG, Salt), Sugar, WHEAT Gluten, Improver (WHEAT Flour (with Calcium, Iron, Niacin, Thiamin), Flour Treatment Agent (E300)), Stabiliser (E417). **FILLING:** Chunky Apple Filling (23.5%) (Apples, Apple Puree, Water, Sugar, Modified Maize Starch, Apple Concentrate, Flavouring, Acidity Regulator (E330), Preservative (E202)), Water, Custard Powder (Sugar, Modified Potato Starch, Whey Powder (MILK), Skimmed MILK Powder, Coconut Oil, Stabilisers (E404, E450iii, E339ii, E451i), Glucose Syrup, Flavouring, Colour (E160a1iii), Salt, MILK Protein), Cinnamon. **TOPPING:** Speculoos Crumbs (WHEAT Flour, Sugar, Vegetable Oil (Palm Oil, Rapeseed Oil), Sugar Candy Syrup (Water, Sugar), Raising Agent (E500), Salt, Cinnamon), Glaze (Water, Stabiliser (E953), Sugar, Gelling Agent (E406), Acidity Regulator (E330), Preservative (E202)).

ALLERGENS

Product Contains:

| | | | |
|--------------------------------------|-----|-------------------------------|-------------|
| Celery/Celeriac | No | Mustard | No |
| Cereals Containing Gluten | Yes | Nuts (Tree) | May Contain |
| Barley | No | Almond nuts | May Contain |
| Oats | No | Brazil nuts | No |
| Rye | No | Cashew nuts | No |
| Wheat (including Spelt and Khorasan) | Yes | Hazelnuts | May Contain |
| Gluten content <20ppm | No | Macadamia (Queensland) nuts | No |
| Crustacea | No | Pecan nuts | May Contain |
| Eggs | Yes | Pistachio nuts | No |
| Fish | No | Walnuts | May Contain |
| Lupin | No | Peanuts | No |
| Milk | Yes | Sesame Seeds | No |
| Molluscs | No | Soybeans | No |
| | | Sulphur Dioxide and Sulphites | No |

Risk Source:

Additional Allergen Information

For allergens, including cereals containing gluten, see ingredients in CAPITALS. May contain traces of nuts.

SUPPLEMENTARY
INGREDIENT
INFORMATION

| | |
|---------------------------------------|-----|
| Palm Oil | Yes |
| Hydrogenated Vegetable Oil/Fat | No |
| GM Protein/DNA | No |

ADDITIVES

Product Contains:

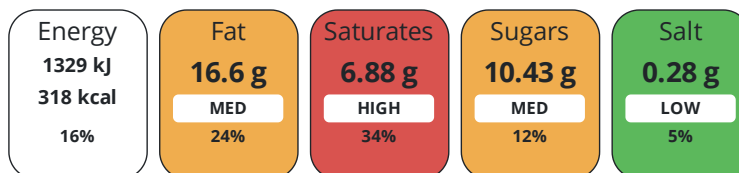
| | | | |
|-------------------------------------|----|---------------------------------|-----|
| Artificial Antioxidants | No | Artificial Flavourings | No |
| Artificial Colours | No | Artificial Preservatives | Yes |
| Artificial Flavour Enhancers | No | Artificial Sweeteners | No |

DIET
SUITABILITY

| | | | |
|------------------------------|----|------------------------|----|
| Suitable for Coeliacs | No | Halal Diet | No |
| Kosher Diet | No | Vegetarian Diet | No |
| Vegan Diet | No | | |

NUTRITIONAL
INFORMATION

Each 100g/ml portion contains:



of your reference intake.

Typical values per 100g/ml : Energy 318kcal / 1329kJ

| Nutrient | per 100g/ml | RI per 100g/ml | per 106.8g/ml serving | RI per 106.8g/ml serving |
|----------------------------------|-------------|----------------|-----------------------|--------------------------|
| Energy (kJ) | 1329 kJ | 16% | 1419.4 kJ | 17% |
| Energy (kcal) | 318 kcal | 16% | 339.6 kcal | 17% |
| Fat | 16.6 g | 24% | 17.7 g | 25% |
| of which Saturates | 6.88 g | 34% | 7.3 g | 37% |
| of which Mono-unsaturates | 6.54 g | | 7 g | |
| of which Polyunsaturates | 2.4 g | | 2.6 g | |
| Carbohydrate | 36.2 g | 14% | 38.7 g | 15% |
| of which Sugars | 10.43 g | 12% | 11.1 g | 12% |
| Fibre | 1.47 g | | 1.6 g | |
| Protein | 5.14 g | 10% | 5.5 g | 11% |
| Salt | 0.28 g | 5% | 0.3 g | 5% |
| Sodium | 111 mg | | 118.5 mg | |

Serving Size 106.8 g

SUPPLEMENTARY
NUTRITIONAL
INFORMATION

Trans Fats per 100 g/ml 0.01 g

HANDLING &
STORAGE
INFORMATION

Directions For Use
Bake from frozen for 18 minutes at 190°C.

Storage Instructions
Frozen < -18°C.

Shelf Life from Time of Production 365 Days

ACCREDITATIONS/
CERTIFICATIONS/
ASSURANCE
SCHEMES

BRCGS Certified
Roundtable of Sustainable Palm Oil (RSPO)

Other Accreditation

| | | | | | | |
|-------------------------|--|--------------------------|--|---------------|----------------|-------------------------|
| ORIGIN | Product Country of Origin/Place of Provenance | United Kingdom | | | | |
| PRODUCT CHARACTERISTICS | Standards Testing | | | | | |
| | Do you undertake trend analysis of microbiological results? | Yes | Is shelf life testing undertaken? | | Yes | |
| | Microbiological Standards | | | | | |
| | Organism | Description | Frequency | Target | Maximum | Sample (g or ml) |
| | Bacillus Cereus (cfu/g or ml) | | Every 6 months | <10 | 1000 | - |
| | Coliforms (cfu/g or ml) | | Every 6 months | <10 | 10 | - |
| | Listeria SPP (cfu/g or ml) | | Every 6 months | <0 | 0 | - |
| | Staphylococcus Aureus (cfu/g or ml) | | Every 6 months | <20 | 1000 | - |
| | Total Viable Count (TVC) (cfu/g or ml) | | Every 6 months | <1000 | 10000 | - |
| | Salmonella (cfu/g or ml) | | Every 6 months | <0 | 0 | - |
| | Yeast (cfu/g or ml) | | Every 6 months | <1000 | 1000 | - |
| | Moulds (cfu/g or ml) | | Every 6 months | <1000 | 1000 | - |
| | Physical Standards | | | | | |
| | Test | Description | Frequency | Target | Range | Sample (g or ml) |
| | Dimensions Height (mm) | | Every Batch | <26 | 20 to 32 | - |
| | Dimensions Length (mm) | | Every Batch | <89 | 80 to 98 | - |
| | Dimensions Width (mm) | | Every Batch | <92.5 | 85 to 100 | - |
| | Weight (g) | | Every Batch | <106.8 | 96.3 to 117.3 | - |
| CONFIGURATION | Case Configuration | Inner Pack Configuration | | | | |
| | Total Quantity of Inner Components in Outer Case | 36 Units | | | | |
| PRODUCT WEIGHTS | Inner Component | | | | | |
| | Variable Weight Consumer Item | No | | | | |
| | Inner Component Weight | 17 g | | | | |
| | Outer Case | | | | | |
| | Outer Case Gross Weight | 4.2 kg | | | | |
| | Outer Case Net Weight | 3.86 kg | | | | |
| PRODUCT DIMENSIONS | Inner Component | | | | | |
| | Inner Component Depth | 680 mm | | | | |
| | Inner Component Width | 790 mm | | | | |
| | Inner Component Height | 0 mm | | | | |
| | Outer Case | | | | | |
| | Outer Case Depth | 393 mm | | | | |
| | Outer Case Width | 293 mm | | | | |
| | Outer Case Height | 136 mm | | | | |
| PALLET INFORMATION | Quantity of Cases Per Pallet Layer | 10 Cases | Pallet Height | | 1.65 MTR | |
| | Quantity of Layers Per Pallet | 11 Layers | Pallet Gross Weight | | 487.82 kg | |
| | Quantity of Cases Per Pallet | 110 Cases | | | | |

PACKAGING

Inner Component Packaging

| Type | Materials | Weight | Recycled Plastic % | Recyclable | Returnable | Composite |
|------|-----------|--------|--------------------|------------|------------|-----------|
| Bag | Plastic | 17 g | 0.00 % | | | |

Outer Case Packaging

| Type | Materials | Weight | Recycled Plastic % | Recyclable | Returnable | Composite |
|------|-----------------|--------|--------------------|------------|------------|-----------|
| Case | Plastic | 2 g | 0.00 % | | | |
| Case | Paper/Cardboard | 286 g | - % | | | |

Transport Packaging

| Type | Materials | Weight | Recycled Plastic % | Recyclable | Returnable | Composite |
|-------|-----------------|---------|--------------------|------------|------------|-----------|
| Other | Plastic | 706 g | 0.00 % | | Yes | |
| Other | Paper/Cardboard | 2 g | - % | | Yes | |
| Other | Wood | 25000 g | - % | | Yes | |

OTHER INFORMATION

Manufacturer Comments

n/a

Rhubarb & Custard Meringue Square

Manufacturer Component Code 225845

Outer Case GTIN 05038910011538



INGREDIENTS

Ingredient Declaration

DOUGH: **WHEAT** Flour (with Calcium, Iron, Niacin, Thiamin), Vegetable Margarine (Palm Oil, Rapeseed Oil, Water, Emulsifier (E471), Salt, Acidity Regulator (E330), Flavouring), Water, Yeast, Egg (**EGG**, Salt), Sugar, **WHEAT** Gluten, Improver (**WHEAT** Flour (with Calcium, Iron, Niacin, Thiamin), Flour Treatment Agent (E300)), Stabiliser (E417). **FILLING:** Chunky Rhubarb Filling (24.0%) (Rhubarb, Sugar, Rhubarb Puree, Modified Maize Starch, Water, Vegetable Glycerine (E422), Preservative (E202), Acidity Regulator (E330), Black Carrot Concentrate), Water, Custard Powder (3.0%) (Icing Sugar, Modified Maize Starch, Skimmed **MILK** Powder, Coconut Oil, Stabiliser (E401), Emulsifier (E471), Salt, Flavouring, Colour (E160aiii)), Whipping Cream (**MILK**), Bourbon Vanilla Paste (Invert Sugar, Vanilla Extract, Water, Spent Vanilla Specks, Thickener (E413)), Spent Vanilla Seeds. **TOPPING:** Meringue Granules (3.0%) (Meringue (Sugar, **WHEAT** Starch, **EGG** Albumen Powder), Vegetable Fat (Shea Oil, Palm Oil, Emulsifier (E322))), Glaze (Water, Stabiliser (E953), Sugar, Gelling Agent (E406), Acidity Regulator (E330), Preservative (E202)).

ALLERGENS

Product Contains:

| | | | |
|---|-----|--------------------------------------|-------------|
| Celery/Celeriac | No | Mustard | No |
| Cereals Containing Gluten | Yes | Nuts (Tree) | May Contain |
| Barley | No | Almond nuts | May Contain |
| Oats | No | Brazil nuts | No |
| Rye | No | Cashew nuts | No |
| Wheat (including Spelt and Khorasan) | Yes | Hazelnuts | May Contain |
| Gluten content <20ppm | No | Macadamia (Queensland) nuts | No |
| Crustacea | No | Pecan nuts | May Contain |
| Eggs | Yes | Pistachio nuts | No |
| Fish | No | Walnuts | May Contain |
| Lupin | No | Peanuts | No |
| Milk | Yes | Sesame Seeds | No |
| Molluscs | No | Soybeans | No |
| | | Sulphur Dioxide and Sulphites | No |

Risk Source:

Additional Allergen Information

For allergens, including cereals containing gluten, see ingredients in CAPITALS. May contain traces of nuts.

SUPPLEMENTARY INGREDIENT INFORMATION

| | |
|---------------------------------------|-----|
| Palm Oil | Yes |
| Hydrogenated Vegetable Oil/Fat | No |
| GM Protein/DNA | No |

ADDITIVES

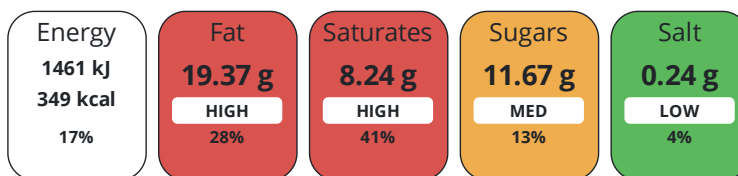
Product Contains:

| | | | |
|-------------------------------------|----|---------------------------------|-----|
| Artificial Antioxidants | No | Artificial Flavourings | No |
| Artificial Colours | No | Artificial Preservatives | Yes |
| Artificial Flavour Enhancers | No | Artificial Sweeteners | No |

DIET SUITABILITY

| | | | |
|------------------------------|----|------------------------|----|
| Suitable for Coeliacs | No | Halal Diet | No |
| Kosher Diet | No | Vegetarian Diet | No |
| Vegan Diet | No | | |

Each 100g/ml portion contains:



of your reference intake.

Typical values per 100g/ml : Energy 349kcal / 1461kJ

| Nutrient | per 100g/ml | RI per 100g/ml | per 101.8g/ml serving | RI per 101.8g/ml serving |
|---------------------------|-------------|----------------|-----------------------|--------------------------|
| Energy (kJ) | 1461 kJ | 17% | 1487.3 kJ | 18% |
| Energy (kcal) | 349 kcal | 17% | 355.3 kcal | 18% |
| Fat | 19.37 g | 28% | 19.7 g | 28% |
| of which Saturates | 8.24 g | 41% | 8.4 g | 42% |
| of which Mono-unsaturates | 7.52 g | | 7.7 g | |
| of which Polyunsaturates | 2.67 g | | 2.7 g | |
| Carbohydrate | 37.9 g | 15% | 38.6 g | 15% |
| of which Sugars | 11.67 g | 13% | 11.9 g | 13% |
| Fibre | 1.27 g | | 1.3 g | |
| Protein | 5.28 g | 11% | 5.4 g | 11% |
| Salt | 0.24 g | 4% | 0.2 g | 3% |
| Sodium | 93 mg | | 94.7 mg | |

Serving Size 101.8 g

Trans Fats per 100 g/ml 0.01 g

Directions For Use

Bake from frozen for 18 minutes at 190°C.

Storage Instructions

Frozen < -18°C.

Shelf Life from Time of Production 365 Days

BRCGS Certified

Other Accreditation

Roundtable of Sustainable Palm Oil (RSPO)

Product Country of Origin/Place of United Kingdom

Provenance

Standards Testing

Do you undertake trend analysis of microbiological results? Yes

Is shelf life testing undertaken? Yes

Microbiological Standards

| Organism | Description | Frequency | Target | Maximum | Sample (g or ml) |
|-------------------------------|-------------|----------------|--------|---------|------------------|
| Bacillus Cereus (cfu/g or ml) | | Every 6 months | <10 | 1000 | - |
| Coliforms (cfu/g or ml) | | Every 6 months | <10 | 10 | - |
| Listeria SPP (cfu/g or ml) | 25g | Every 6 months | <0 | 0 | - |

| Organism | Description | Frequency | Target | Maximum | Sample (g or ml) |
|--|-------------|----------------|--------|---------|------------------|
| Staphylococcus Aureus (cfu/g or ml) | | Every 6 months | <20 | 1000 | - |
| Total Viable Count (TVC) (cfu/g or ml) | | Every 6 months | <1000 | 10000 | - |
| Salmonella (cfu/g or ml) | 25g | Every 6 months | <0 | 0 | - |
| Yeast (cfu/g or ml) | | Every 6 months | <1000 | 1000 | - |
| Moulds (cfu/g or ml) | | Every 6 months | <1000 | 1000 | - |

Physical Standards

| Test | Description | Frequency | Target | Range | Sample (g or ml) |
|------------------------|-------------|-------------|--------|---------------|------------------|
| Dimensions Height (mm) | | Every Batch | <26 | 20 to 32 | - |
| Dimensions Length (mm) | | Every Batch | <89 | 80 to 98 | - |
| Dimensions Width (mm) | | Every Batch | <92.5 | 85 to 100 | - |
| Weight (g) | | Every Batch | <101.8 | 92.3 to 111.3 | - |

CONFIGURATION

Case Configuration

Inner Pack Configuration

Total Quantity of Inner Components in Outer Case 36 Units

PRODUCT WEIGHTS

Inner Component

Variable Weight Consumer Item No

Outer Case

Outer Case Gross Weight 4.2 kg

Outer Case Net Weight 3.86 kg

PRODUCT DIMENSIONS

Inner Component

Inner Component Depth 680 mm

Inner Component Width 790 mm

Inner Component Height 0 mm

Outer Case

Outer Case Depth 393 mm

Outer Case Width 293 mm

Outer Case Height 136 mm

PALLET INFORMATION

Quantity of Cases Per Pallet Layer 10 Cases

Pallet Height 1.65 MTR

Quantity of Layers Per Pallet 11 Layers

Pallet Gross Weight 487.82 kg

Quantity of Cases Per Pallet 110 Cases

PACKAGING

Inner Component Packaging

| Type | Materials | Weight | Recycled Plastic % | Recyclable | Returnable | Composite |
|------|-----------|--------|--------------------|------------|------------|-----------|
| Bag | Plastic | 17 g | 0.00 % | | | |

Outer Case Packaging

| Type | Materials | Weight | Recycled Plastic % | Recyclable | Returnable | Composite |
|------|-----------------|--------|--------------------|------------|------------|-----------|
| Case | Plastic | 2 g | 0.00 % | | | |
| Case | Paper/Cardboard | 286 g | - % | | | |

Transport Packaging

| Type | Materials | Weight | Recycled Plastic % | Recyclable | Returnable | Composite |
|-------|-----------------|---------|--------------------|------------|------------|-----------|
| Other | Plastic | 706 g | 0.00 % | | Yes | |
| Other | Paper/Cardboard | 2 g | - % | | Yes | |
| Other | Wood | 25000 g | - % | | Yes | |

OTHER
INFORMATION

Manufacturer Comments

n/a

Cherry & Almond Bakewell Square

Manufacturer Component Code 225846
 Outer Case GTIN 05038910011538



INGREDIENTS

Ingredient Declaration

DOUGH: WHEAT Flour (with Calcium, Iron, Niacin, Thiamin), Vegetable Margarine (Palm Oil, Rapeseed Oil, Water, Emulsifier (E471), Salt, Acidity Regulator (E330), Flavouring), Water, Yeast, Egg (**EGG**, Salt), Sugar, **WHEAT** Gluten, Improver (**WHEAT** Flour (with Calcium, Iron, Niacin, Thiamin), Flour Treatment Agent (E300)), Stabiliser (E417). **FILLING:** Cherry Filling (23.3%) (Cherries, Sugar, Water, Modified Maize Starch, Elderberry Concentrate, Flavouring, Acidity Regulator (E330), Preservative (E202)), Vegetable Margarine (Palm Oil, Rapeseed Oil, Water, Coconut Oil, Salt, Emulsifier (E471), Acidity Regulator (E330), Flavouring), Sugar, **ALMOND** Powder, **WHEAT** Flour (with Calcium, Iron, Niacin, Thiamin), Water, Custard Powder (Sugar, Modified Potato Starch, Whey Powder (**MILK**), Skimmed **MILK** Powder, Coconut Oil, Stabilisers (E404, E450iii, E339ii, E451i), Glucose Syrup, Flavouring, Colour (E160aiii), Salt, **MILK** Protein), Egg (**EGG**, Salt), Flavouring. **TOPPING: ALMONDS** (2.9%), Glaze (Water, Stabiliser (E953), Sugar, Gelling Agent (E406), Acidity Regulator (E330), Preservative (E202)).
ICING: Sugar, Water, Glucose Syrup.

ALLERGENS

Product Contains:

| | | | |
|---|-----|--------------------------------------|-------------|
| Celery/Celeriac | No | Mustard | No |
| Cereals Containing Gluten | Yes | Nuts (Tree) | Yes |
| Barley | No | Almond nuts | Yes |
| Oats | No | Brazil nuts | No |
| Rye | No | Cashew nuts | No |
| Wheat (including Spelt and Khorasan) | Yes | Hazelnuts | May Contain |
| Gluten content <20ppm | No | Macadamia (Queensland) nuts | No |
| Crustacea | No | Pecan nuts | May Contain |
| Eggs | Yes | Pistachio nuts | No |
| Fish | No | Walnuts | May Contain |
| Lupin | No | Peanuts | No |
| Milk | Yes | Sesame Seeds | No |
| Molluscs | No | Soybeans | No |
| | | Sulphur Dioxide and Sulphites | No |

Risk Source:

Additional Allergen Information

For allergens, including cereals containing gluten, see ingredients in CAPITALS. May contain traces of other nuts and cherry stones.

SUPPLEMENTARY INGREDIENT INFORMATION

| | |
|---------------------------------------|-----|
| Palm Oil | Yes |
| Hydrogenated Vegetable Oil/Fat | No |
| GM Protein/DNA | No |

ADDITIVES

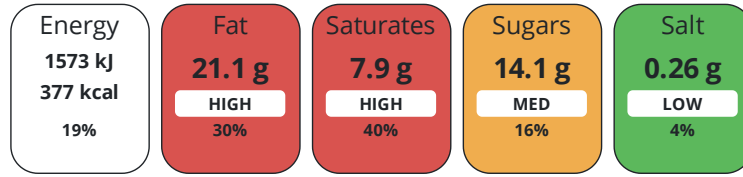
Product Contains:

| | | | |
|-------------------------------------|----|---------------------------------|-----|
| Artificial Antioxidants | No | Artificial Flavourings | No |
| Artificial Colours | No | Artificial Preservatives | Yes |
| Artificial Flavour Enhancers | No | Artificial Sweeteners | No |

DIET SUITABILITY

| | | | |
|------------------------------|----|------------------------|--------------|
| Suitable for Coeliacs | No | Halal Diet | Suitable for |
| Kosher Diet | No | Vegetarian Diet | Suitable for |
| Vegan Diet | No | | |

Each 100g/ml portion contains:



of your reference intake.

Typical values per 100g/ml : Energy 377kcal / 1573kJ

| Nutrient | per 100g/ml | RI per 100g/ml | per 101.8g/ml serving | RI per 101.8g/ml serving |
|---------------------------|-------------|----------------|-----------------------|--------------------------|
| Energy (kJ) | 1573 kJ | 19% | 1601.3 kJ | 19% |
| Energy (kcal) | 377 kcal | 19% | 383.8 kcal | 19% |
| Fat | 21.1 g | 30% | 21.5 g | 31% |
| of which Saturates | 7.9 g | 40% | 8 g | 40% |
| of which Mono-unsaturates | 8.91 g | | 9.1 g | |
| of which Polyunsaturates | 3.27 g | | 3.3 g | |
| Carbohydrate | 39.1 g | 15% | 39.8 g | 15% |
| of which Sugars | 14.1 g | 16% | 14.4 g | 16% |
| Fibre | 1.9 g | | 1.9 g | |
| Protein | 6.7 g | 13% | 6.8 g | 14% |
| Salt | 0.26 g | 4% | 0.3 g | 5% |
| Sodium | 10.3 mg | | 10.5 mg | |

Serving Size 101.8 g

Trans Fats per 100 g/ml 0.01 g

SUPPLEMENTARY
NUTRITIONAL
INFORMATION

HANDLING &
STORAGE
INFORMATION

Directions For Use

Bake from frozen for 18 minutes at 190°C.

Storage Instructions

Frozen < -18°C.

Shelf Life from Time of Production 365 Days

ACCREDITATIONS/
CERTIFICATIONS/
ASSURANCE
SCHEMES
ORIGIN

BRCGS Certified

Other Accreditation

Roundtable of Sustainable Palm Oil (RSPO)

Product Country of Origin/Place of United Kingdom

Provenance

PRODUCT
CHARACTERISTICS

Standards Testing

Do you undertake trend analysis of microbiological results? Yes

Is shelf life testing undertaken? Yes

Microbiological Standards

| Organism | Description | Frequency | Target | Maximum | Sample (g or ml) |
|-------------------------------|-------------|----------------|--------|---------|------------------|
| Bacillus Cereus (cfu/g or ml) | | Every 6 months | <10 | 1000 | - |
| Coliforms (cfu/g or ml) | | Every 6 months | <10 | 10 | - |
| Listeria SPP (cfu/g or ml) | 25g | Every 6 months | <0 | 0 | - |

| Organism | Description | Frequency | Target | Maximum | Sample (g or ml) |
|--|-------------|----------------|--------|---------|------------------|
| Staphylococcus Aureus (cfu/g or ml) | | Every 6 months | <20 | 1000 | - |
| Total Viable Count (TVC) (cfu/g or ml) | | Every 6 months | <1000 | 10000 | - |
| Salmonella (cfu/g or ml) | 25g | Every 6 months | <0 | 0 | - |
| Yeast (cfu/g or ml) | | Every 6 months | <1000 | 1000 | - |
| Moulds (cfu/g or ml) | | Every 6 months | <1000 | 1000 | - |

Physical Standards

| Test | Description | Frequency | Target | Range | Sample (g or ml) |
|------------------------|-------------|-------------|--------|---------------|------------------|
| Dimensions Height (mm) | | Every Batch | <26 | 20 to 32 | - |
| Dimensions Length (mm) | | Every Batch | <89 | 80 to 98 | - |
| Dimensions Width (mm) | | Every Batch | <92.5 | 85 to 100 | - |
| Weight (g) | | Every Batch | <101.8 | 92.3 to 111.3 | - |

CONFIGURATION

Case Configuration

Inner Pack Configuration

Total Quantity of Inner Components in Outer Case 36 Units

PRODUCT WEIGHTS

Inner Component

Variable Weight Consumer Item No
Inner Component Weight 17 g

Outer Case

Outer Case Gross Weight 4.2 kg
Outer Case Net Weight 3.86 kg

PRODUCT DIMENSIONS

Inner Component

Inner Component Depth 680 mm
Inner Component Width 790 mm
Inner Component Height 0 mm

Outer Case

Outer Case Depth 393 mm
Outer Case Width 293 mm
Outer Case Height 136 mm

PALLET INFORMATION

Quantity of Cases Per Pallet Layer 10 Cases **Pallet Height** 1.65 MTR
Quantity of Layers Per Pallet 11 Layers **Pallet Gross Weight** 487.82 kg
Quantity of Cases Per Pallet 110 Cases

PACKAGING

Inner Component Packaging

| Type | Materials | Weight | Recycled Plastic % | Recyclable | Returnable | Composite |
|------|-----------|--------|--------------------|------------|------------|-----------|
| Bag | Plastic | 17 g | 0.00 % | | | |

Outer Case Packaging

| Type | Materials | Weight | Recycled Plastic % | Recyclable | Returnable | Composite |
|------|-----------------|--------|--------------------|------------|------------|-----------|
| Case | Plastic | 2 g | 0.00 % | | | |
| Case | Paper/Cardboard | 286 g | - % | | | |

Transport Packaging

| Type | Materials | Weight | Recycled Plastic % | Recyclable | Returnable | Composite |
|-------|-----------------|---------|--------------------|------------|------------|-----------|
| Other | Plastic | 706 g | 0.00 % | | Yes | |
| Other | Paper/Cardboard | 2 g | - % | | Yes | |
| Other | Wood | 25000 g | - % | | Yes | |

OTHER INFORMATION

Manufacturer Comments

n/a

CONTACT INFORMATION

Address

Lantmannen Unibake
Maidstone Road
Kingston
Milton Keynes
MK10 0BD
England

Technical Contact

Inesa Jegoroviene
Senior Specifications Technologist
inesa.jegoroviene@lantmannen.com

P. (Phone) 07885418956

P. (Phone) 07780837112

Complaints Contact

Ursula Jaillet
Technical Coordinator
ursula.jaillet@lantmannen.com

The information on the [Erudus System](#) has been supplied by the manufacturers of the products and, whilst the owners of the Erudus System take steps to ensure the information is regularly updated, they give no warranty and no guarantee that the information is accurate. Product information and ingredients may change, please always read product labels carefully in addition to using the information provided by Erudus.

We do not accept liability for any inaccuracies or incorrect information contained on this site.
Please visit <http://www.erudus.com/terms-and-conditions> for full terms and conditions.